

## CORE ACADEMIC SKILLS FOR EDUCATORS

All candidates seeking initial educator licensure in Vermont are required to meet the passing scores established by the Vermont Standards Board for Professional Educators (VSBPE) for the **Praxis Core Academic Skills for Educators (CORE®)**.

The new **Praxis CORE tests** replace the Praxis I in the fall of 2013. There are three CORE academic skills tests for educators: Reading (5712), Writing (5722), and Mathematics (5732). The Praxis CORE subtests measure whether educators have the necessary reading, writing, and mathematical knowledge/skills. The Praxis CORE does not assess one's knowledge of teaching nor does it predict who will become a good teacher or administrator. All candidates need to pass each of the Core tests to be eligible for licensure.

If you have taken and passed 2 out of 3 of the PPST series Praxis you will have until August 31, 2014 to complete the PPST or C-PPST tests you may be lacking. After 8/31/14 Praxis I will be phased out completely which will require you to take the new **CORE®** test.

Core Academic Skills Test for Educators			
	Test Code	Cut Score	Please refer to the ETS website for the PPST/C-PPST test fees.
Reading	5712	156	
Writing	5722	162	
Mathematics	5732	150	
Costs	\$50 registration fee plus \$40 per test		\$85-1 test \$125-2 tests \$135-combined

## PRAXIS II

Praxis II tests focus primarily on content knowledge rather than pedagogy.

All candidates seeking an initial license or an additional endorsement in Mathematics, Social Studies, English, Science, Elementary Education, Art, Music, Physical Education, ELL, S/LP, Reading/ELA, School Psychologist, Audiology, Modern & Classical Languages (French, German, Spanish, Latin, Chinese), Middle Grades (English, Mathematics, Science, and/or Social Studies) must achieve passing scores on the required Praxis II Subject Assessment(s). In all other languages ACTFL or ASLTA testing is required to demonstrate proficiency, for more info go to: [http://education.vermont.gov/documents/proficiency\\_definitions.pdf](http://education.vermont.gov/documents/proficiency_definitions.pdf)

Praxis II Test Codes, Cut Scores, and Fees (does not include \$50 registration fee)						
Endorsement Area	Candidates must meet the passing score on either the multiple choice <u>or</u> essay version.					
	Multiple Choice(MC)			Essay		
	Test Code	Cut Score	Fee	Test Code	Cut Score	Fee
Art	Not an option			0135	161	\$139
Elementary Education	5031		\$150	Not an option		
Reading	5032	165	\$50			
Math	5033	164	\$50			
Social Studies	5034	155	\$50			
Science	5035	159	\$50			
English	5039	168	\$139	Not an Option		
ELL	0361	149	\$115	Not an Option		
Math	5161	160	\$115	Not an Option		
Middle Grades English	5047	164	\$139	Not an option		
Middle Grades Mathematics	5169	165	\$139	Not an option		
Middle Grades Science	0439	157	\$139	Not an option		
Middle Grades Social Studies	0089	165	\$139	Not an option		
	5089	165	\$139	Not an option		
Latin	0601	147	\$115	Not an option		
<b>Effective September 2013, Praxis II tests for the following language areas are administered <u>only</u> computer-based at Prometric sites (800-853-6773)</b>						
French	5174	162	\$150	Tests contain multiple choice and essay questions. Tests will be offered 3 times p/year, by computer only.		
German	5183	163	\$150			
Spanish	5195	168	\$150			
Chinese	5665	164	\$150			
Music	0114	162	\$139	Not an Option		
Physical Education	0095	169	\$139	Not an Option		
	5095	169	\$139	Not an Option		
Reading/ELA Specialist	5301	164	\$139	Not an Option		
Science	Candidates must meet a passing score on the General Science multiple choice <u>OR</u> essay test <u>AND</u> one subject specific test of their choosing. <b>Passing scores on 2 tests is required.</b>					
General Science	0435	157	\$115	0433	145	\$139
	5435	157	\$115	n/a	n/a	n/a
Biology	0235	151	\$115	0233	150	\$139
Chemistry	0245	160	\$115	0242	150	\$139
Earth Science	0571	158	\$115	Not an option		
Physics	0265	140	\$115	0262	150	\$139
Social Studies	0086	153	\$139	Not an Option		
Sch. Psych.	0401	165	\$115	Not an Option		
S/LP	0330	600	\$115	Not an Option		
Audiology	0342	170	\$115	Not an Option		

## FREQUENTLY ASKED QUESTIONS

**Who is exempt from taking Praxis CORE and Praxis II tests?**

- Candidates who qualify for a Level II license in the endorsement area being sought.
- Candidates who otherwise qualify for licensure/endorsement and have achieved National Board Certification®

**Do I have to pay a registration fee each time I register to take a Praxis test?** No. Test takers are required to pay the registration fee only once during a testing year.

**I have taken my test, how long before I get my results?**

Your scores will be available to you online approximately four weeks after your test date. You can get your scores earlier by utilizing the Scores-by-Phone service. For more information on score reporting dates and accessing scores, see [Getting Your Praxis Scores](http://www.ets.org/praxis) at [www.ets.org/praxis](http://www.ets.org/praxis)

**I took the Praxis II Elementary Education test and failed one section, what do I do now?** A candidate who fails a section must re-take that section only.

**I took the Praxis Core Academic Skills for Educators test and failed a section, what do I do now?** A candidate who fails a section must re-take that section only.

**I took the Praxis tests a few years ago in a different state. Can I use those scores or do I have to take the test again?** If candidates complete tests that have the same title codes as the tests Vermont has adopted and the scores meet or exceed Vermont's passing scores, these scores can be used. Candidates should contact the Educational Testing Service and request that an official score report be sent to the Vermont Agency of Education using recipient code "8410."

**I want to apply for a license in Career and Technical Education as an administrator or support professional (e.g., school nurse, guidance counselor, online teaching specialist). Do I need to take a Praxis test?** Yes. All candidates applying for initial Vermont licensure must meet Vermont's passing scores on the Core Academic Skills for Educators as well as any identified Praxis II tests associated with the endorsement being sought.

**Will there be other endorsement areas that will require a Praxis II Subject Assessment test?** Maybe. Subject assessments for other endorsement areas may be adopted in the future.

**How do Vermont's testing requirements apply to Peer Review candidates?** Peer Review candidates must meet all licensure testing requirements that are in effect when the Licensing Office receives the candidate's application for a

license. Please note that Peer Review candidates can only apply for a license after the panel has recommended the candidate for licensure and the candidate has received written confirmation of such from the Licensing Office.

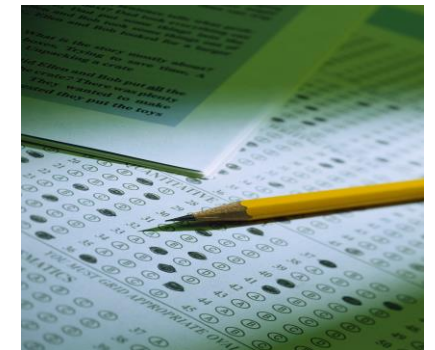
**I am applying for SLP/Audiology licensure in Vermont. What tests are required?** Applicants for Education Speech Language Pathology endorsement must meet the passing scores for the Praxis CORE. Candidates must pass the appropriate Praxis II subject assessment.

**I previously held a Vermont educator license and wish to reinstate it. Do I have to meet the testing requirements?** No. Vermont's testing requirements do not need to be met for reinstatement of a previously held educator license.

**I am applying for the science endorsement limited to a specific science subject (i.e., biology, chemistry, physics, or earth science). Do I need to take a Praxis II General Science Subject Assessment test?** No. Applicants would be required to meet Vermont's passing score on the applicable Praxis II subject specific test only.

**If I passed a Praxis II content knowledge test (English, math, science or social studies), do I also need to pass a middle grades Praxis test in the same content area to obtain a middle grades endorsement?** No. A Praxis II passing score in a secondary content area will meet the testing requirements for the middle grades endorsement in that same content area. For the middle grades science endorsement the general science test can be substituted for the middle grades science test.

**Can I have my college send the AOE my test scores?** No, only test scores received **directly from ETS** will be considered official.



## ETS INFORMATION

### How do I register?

**Online:** Register online for both computer-delivered and paper delivered tests using credit/debit card or PayPal. (Please note, if you are requesting testing accommodations, you must register by mail with appropriate forms. Please see [www.ets.org/praxis/register/accommodations](http://www.ets.org/praxis/register/accommodations) for more information).

**By mail:** Register by mail using check or money order. For more information on registering for a computer-delivered test by mail, visit [www.ets.org/praxis/register/computer](http://www.ets.org/praxis/register/computer). For more information on registering for paper-delivered test by mail, visit [www.ets.org/praxis/register/paper](http://www.ets.org/praxis/register/paper).

**Are special accommodations available if required by the test taker?** The following accommodations are available: extended time for test takers whose primary language is not English, Monday testing for test takers whose military service or religious convictions prevent testing on Saturday, and nonstandard testing accommodations for test takers with documented health-related needs or disabilities. **Consult the Praxis website, at [www.ets.org/praxis/register/accommodations](http://www.ets.org/praxis/register/accommodations)**, for additional information regarding what's required to qualify.

**What if I need to cancel or reschedule my test prior to my test date?** You may cancel or reschedule your test online or by calling ETS Customer Service at 1-800-772-9476 no later than four full days prior to your test date (not including the day of your test). If you cancel within this time frame, you may be eligible for a 50% refund of your test fees. More information about cancellation, rescheduling and refunds available at [www.ets.org/praxis/register/changes/](http://www.ets.org/praxis/register/changes/).

### When will I receive my scores?

**Computer-Delivered Tests:** Scores for tests that are administered continuously will be available 2-3 weeks after the testing window closes (regardless of the specific day on which you tested within that window). Official score reports will be available online for 1 calendar year from the score reporting date. You can view your unofficial multiple-choice scores for certain tests at the test center. Because of the scoring process for constructed-response questions, your scores for tests containing constructed-response questions will not be available at the test center. **Paper-Delivered Tests:** refer to the information and release dates at [www.ets.org/praxis/scores](http://www.ets.org/praxis/scores).

## PAPER TESTS: Vermont Test Centers and Test Dates

Test Locations	Test Dates	Registration Must be Received By	Late Registration Must be Received By (w/ \$45 late fee)
Castleton State College Johnson State College Middlebury College Woodstock Union High School	<b>09/21/13</b> All tests offered except Chemistry (TC0242) Latin (TC0600) Physics (TC0262)	<b>08/22/13</b>	<b>08/29/13</b>
Castleton State College Essex Jct. Education Center Johnson State College Lyndon State College Woodstock Union High School	<b>11/2/13*</b> All tests offered except Biology (TC0231) Chemistry (TC0241) Physics (TC0261)	<b>10/3/13</b>	<b>10/10/13</b>
Castleton State College Johnson State College Middlebury College Woodstock Union High School	<b>03/08/14</b> All tests offered except Chemistry (TC0242) Latin (TC0600) Physics (TC0262)	<b>02/6/14</b>	<b>02/13/14</b>
Castleton, Johnson, Lyndon & Woodstock	<b>06/07/14*</b>	<b>05/08/14</b>	<b>05/30/14</b>
*Primary Language Not English (PLNE) administration dates also			

**COMPUTER BASED TESTING LOCATION:** Prometric Services, 600 Blair Park Rd, Williston VT 05495. To register you must go to the ETS website: [www.ets.org](http://www.ets.org).

ETS will automatically report to the Vermont Agency of Education all scores of tests administered at Vermont Test Centers.

Licensure candidates planning to take any Praxis tests outside Vermont will need to use recipient code "8410" in order for the Vermont Agency of Education to receive an official score report.

The **Top10 Questions Asked by Praxis<sup>™</sup> Candidates** can be viewed at [www.ets.org/praxis/top10](http://www.ets.org/praxis/top10).

Test Preparation materials can be found at [www.ets.org/praxis/testprep](http://www.ets.org/praxis/testprep).

For more information on Praxis, or to register to take a test, log onto [www.ets.org/praxis](http://www.ets.org/praxis) or call the Educational Testing Service (ETS) customer service at 1-800-772-9476.



## VERMONT'S TESTING REQUIREMENTS FOR EDUCATOR LICENSURE

**2013-2014**



For more information on testing  
Contact: David Hough  
Email: [david.hough@state.vt.us](mailto:david.hough@state.vt.us)  
Telephone: 802-828-0449